

DELIVERY LIST		
Part No.	Description	Qty
4200-579	Platform Assembly	1
5091-018	Spindle Assembly	1
4200-133	Protection Hoop	1
2441-005	Retention Clip	1
	Fixings Pack	1

ROTAPLAY	
SPEEDWAY	
PROD CODE:	6070-814
SIZE:	1500 DIA x 900
AGE RANGE:	2—5 YEARS
FREE FALL HEIGHT:	212mm
FREE SPACE:	2000mm
HEAD CLEARANCE:	2000 (FROM DECK SURFACE)
WEIGHT OF HEAVIEST PART	280 Kg
OVERALL WEIGHT OF UNIT	320 Kg

SPECIFICATION

Solid steel components made from steel to BS 9070 Part 1 (1983).

Non-standard fastenings are plated for weather protection and designed to deter vandals.

Floor Panels made from steel Durbar Plate.

Metal parts coated with low lead polyester powder paint to BS EN 71 Pt. 3 (1995).

Standard Fastenings are plated to one of the following specifications:-

BS 3692 (1967), BS 4190 (1967), BS 4168 Pt. 1 (1981), BS 4174 (1972).

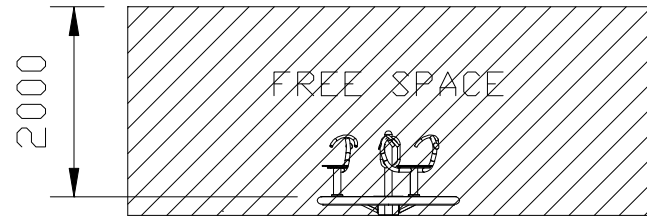
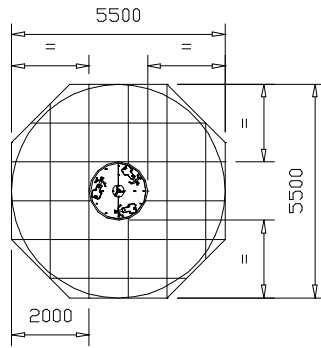
INSTALLATION INSTRUCTIONS

- 1 Read these instructions carefully before commencing with the erection of the unit.
- 2 Do not tighten fastenings until unit is completely installed unless otherwise stated.
- 3 Excavate foundations as shown
- 4 Place Spindle (G) in foundations ensuring spindle rests on a brick at height shown and is correctly aligned vertically.
- 5 Secure Protection Hoop (R)
- 6 Backfill with concrete and allow 96 hours before proceeding. Concrete mix to be : 4 parts gravel, 2 parts sand & 1 part cement.
- 7 Remove centre turret and bearing housing top cover.
- 8 Lower platform assembly onto the spindle. The spindle should protrude 30mm from the top of the bearing housing when fitted correctly.
- 9 Grease thrust (bottom) bearing prior to fitting. Use Fina Ceran HV or equivalent grease.
- 10 Fit greased thrust bearing (N) over the spindle and into the housing
- 11 Fit retention clip onto spindle.
- 12 Fill bearing housing with grease through grease nipple.
- 13 Refit bearing housing top cover and centre turret cover.
- 14 The unit is now ready for use.

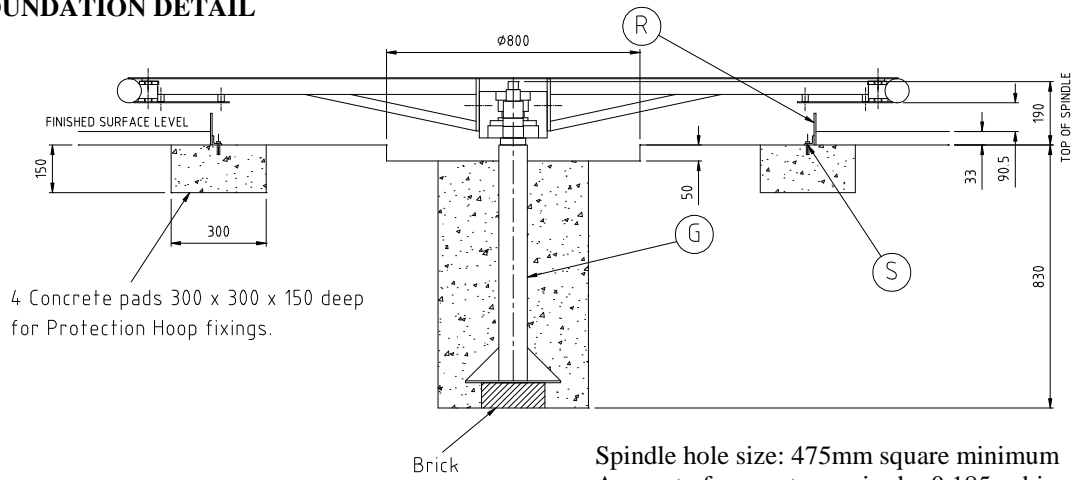
Note: All protruding screw threads to be peened over to remove sharp edges.

Lifting aid will be required when installing this piece of equipment.

SURFACING & FREE SPACE DETAIL



FOUNDATION DETAIL



4 Concrete pads 300 x 300 x 150 deep for Protection Hoop fixings.

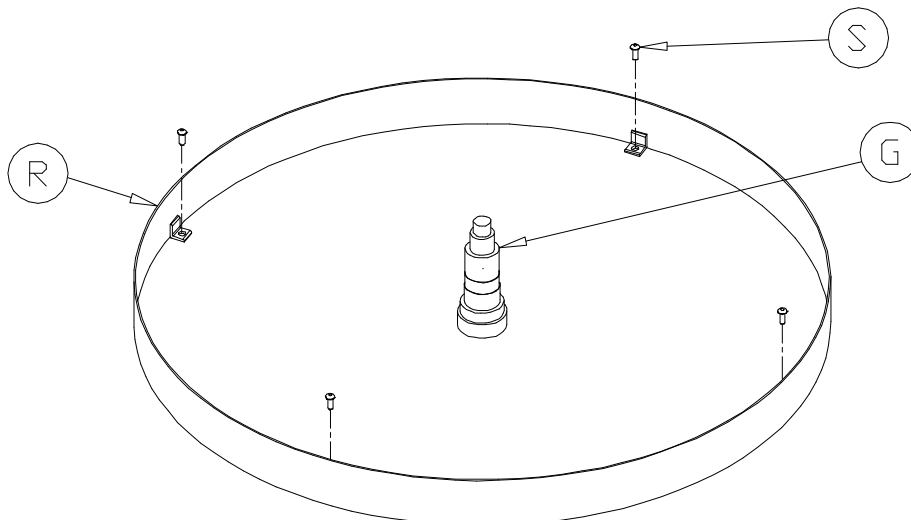
Note: If any water traps are produced in foundations, drainage

Spindle hole size: 475mm square minimum
 Amount of concrete required – 0.185 cubic metres
 Note: Ground clearance from finished surface level to underside of platform to be between 60mm and 110mm, to be maintained for 300mm towards the spindle. (BS EN 1176)

If there is uneven movement between underside of ring and ground, adjustment can be achieved by slightly loosening off the appropriate strut arm and inserting two M10 grub screws in the strut arm backplate. Adjustment can then be made to achieve an all round even underside to ground clearance.

PROTECTION HOOP DETAIL

Position Protection Hoop centrally with spindle and secure with M12 trubolt.

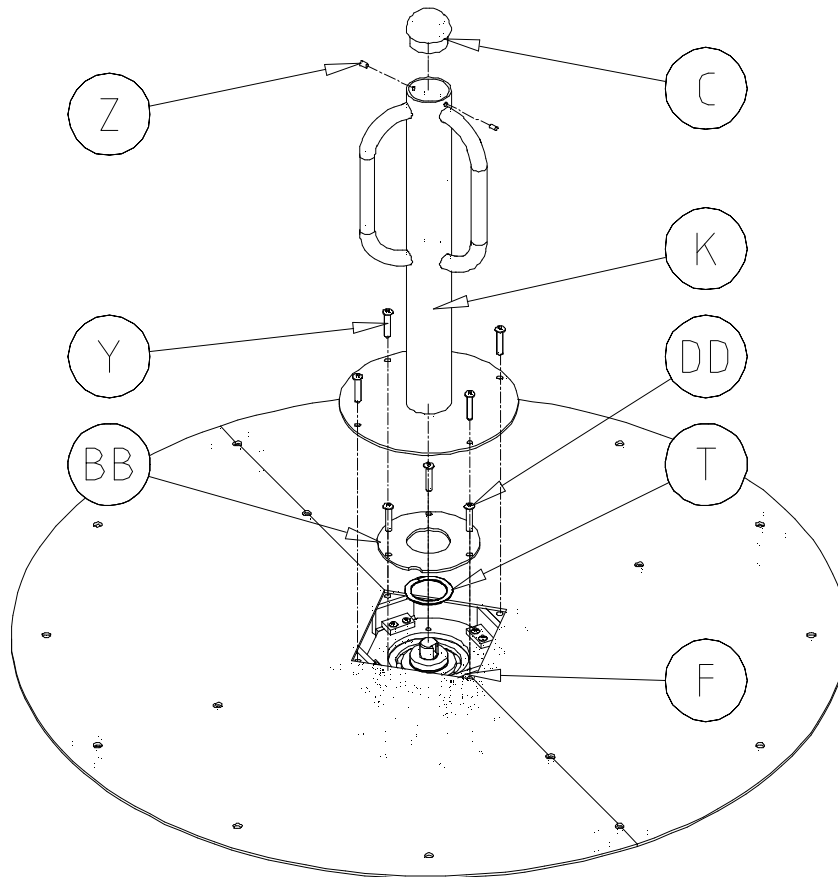
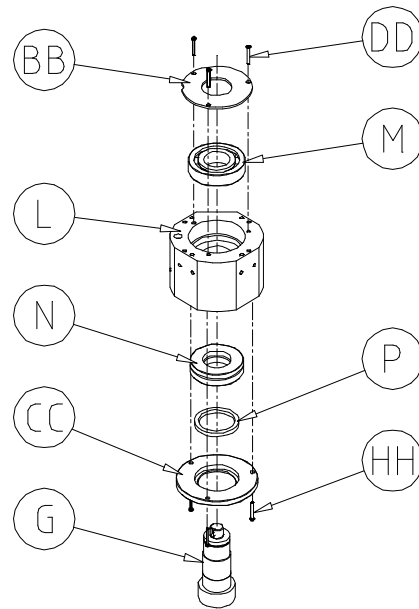


BEARING HOUSING DETAIL

Fit Platform Assembly onto Spindle as shown in Foundation Detail.

Remove Top Bearing Cover and fit Radial Ball Bearing in position on Spindle and in Housing, ensuring that pressure is applied evenly to inner and outer races.

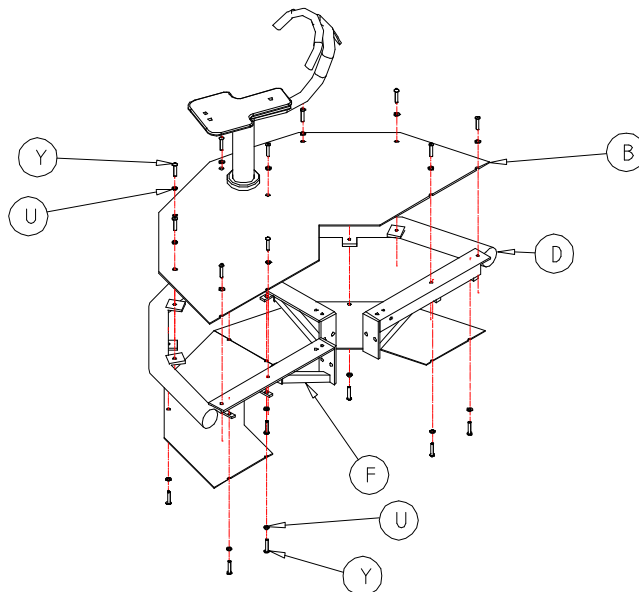
Oil seal is fitted letter side upwards, to allow excess grease to escape.



FIXING DETAILS FOR RETENTION CLIP, CENTRE TURRET & CAP

Fit Retention Clip to Spindle. Re-fit Bearing Top Cover using M8 x 16 Button Head Screws. Fit Centre Turret to Struts using M10 x 25 Button Head Screws. Fit Aluminium Cap to Turret with M8 x 12 Cone End Grub Screws.

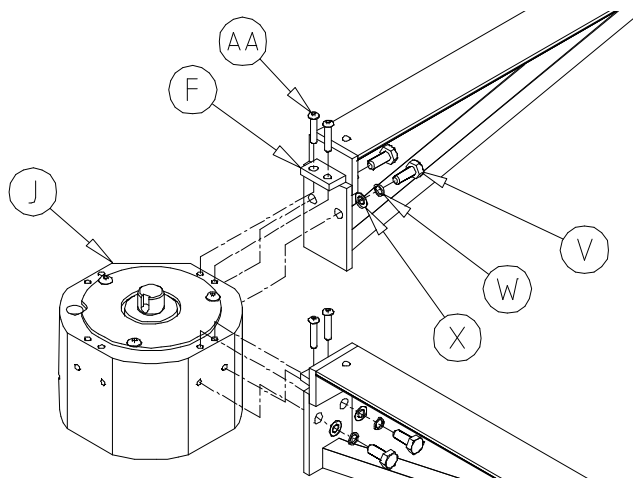
FIXING DETAILS FOR MAINTENANCE



FIXING DETAILS FOR SEAT SUPPORT, DECK & QUARTER SECTION

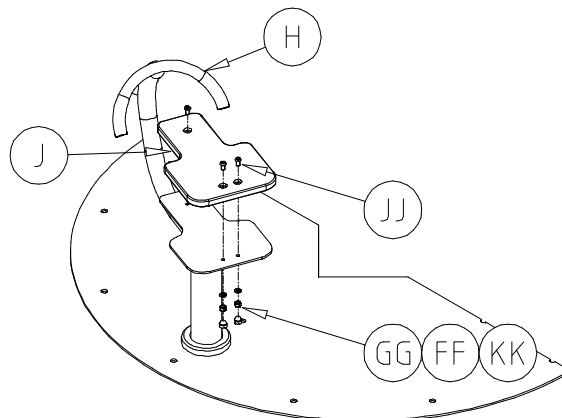
Fit Deck Assembly A & B to Strut and Outer Ring using M10 x 25 Button Head Screws and 10mm Washers.

Fit Quarter Sections To Strut and Outer Ring using M10 x 25 Button Head Screws and 10mm Washers.



FIXING DETAILS FOR STRUT TO BEARING HOUSING

Fit Strut to Bearing Housing using M12 x 30 Hex Head Bolts and M8 x 25 Button Head Screws, 12mm Spring Washers and 12mm Washers.




FIXING DETAILS FOR SEAT TO SUPPORT ASSEMBLY

Fit Seat to Seat Support Assembly using M8 x 30 Pentagon Countersunk Screws, M8 Washers, M8 Nyloc Nuts and M8 Nut Covers.

REF	QTY	DESCRIPTION	PART No
A	1	Deck Assembly A	4200-576
B	1	Deck Assembly B	4200-578
C	1	Aluminium Top Cap	3711-002
D	1	Outer Ring	4082-013
E	4	Quarter Section	3200-226
F	4	Strut Arm	4031-048
G	1	Spindle Assembly	5091-018
H	6	Plastic Hand Grips	2471-052
J	3	Seat	3726-105
K	1	Centre Turret Assembly	4200-574
L	1	Bearing Housing	3032-019
M	1	Radial Ball Bearing (Ref. FAG 6313 2RS)	2541-113
N	1	Thrust Bearing (Ref. FAG 73148 TVP)	2542-006
P	1	Oil Seal (Ref. TC 90 110 8)	2900-042
R	1	Protection Hoop	4200-132
S	4	M12 Trubolt	2341-028
T	1	Retention Clip (Ref. DNS-65)	2441-005
U	30	10mm Washer	2215-508
V	8	M12 x 30 Hex Head Bolt	2175-135
W	8	12mm Spring Washer	2212-004
X	8	12mm Washer	2215-509
Y	32	M10 x 25 Button Head Screw	2176-126
Z	2	M8 x 12 Cone End Grub Screw	2171-115
AA	8	M8 x 25 Button Head Screw	2176-152
BB	1	Top Bearing Cover	3200-456
CC	1	Bottom Bearing Cover	3030-163
DD	3	M8 x 16 Button Head Screw	2176-151
EE	1	High Temp Grease (400g Tube)	2581-003
FF	9	M8 Nyloc Nut	2192-001
GG	9	8mm Washer	2215-507
HH	3	M8 x 30 Button Head Screw	2176-153
JJ	9	M8 x 30 Pentagon Countersunk Screw	2176-228
KK	9	M8 Nut Cover	2613-015

For maintenance instructions see separate sheet.

	Compiled By:		Approved By:		Rev	NEW	1	2	3	4
	PK				ECN	1406	minor	minor	1470	minor
	Date:		Date:		Sig	PK	SB	PK	SB	PK
	18/03/02				Date	18/03/02	26/03/03	19/02/04	13/05/04	9/5/05
6	7	8	9	10	11	12				
minor	minor	minor	Minor	minor	minor	minor				
SB	SB	TW	TW	SB	TW	SB				
28/07/05	06/06/06	02/08/06	23/05/07	17/7/07	12/11/07	03/09/08				

DESPATCH LIST

Sheet 1 of 1

Product: Speedway

Code No. 6070-814

Date of Issue: 10/09/02

Order No.

Issue: C

Item	Unit Qty	Description	Part No.
1	1	Platform Assembly	4200-579
2	1	Protection Hoop	4200-133
3	1	Spindle Assembly	5091-018
4	1	Fixings Pack	

Total No. of Items

Picked By:

Checked By:

COMPILED	REV	NEW	1	2			
BY: Paul Kearney	ECN No.		1470	1494			
	DATE		12/05/04	14/07/05			
DATE: 09/10/2002	SIGN	PK	SB	SB			

FIXINGS LIST

Sheet 1 of 1

Product: Speedway

Code No. 6070-814

Date of Issue: 10/09/02

Order No.

Issue: D

Item	Unit Qty	Description	Part No.
1	4	Truebolt - M12	2341-028
2	1	Radial Ball Bearing (Ref FAG 6313 2RS)	2541-113
3	1	Retention Clip (Ref DNS-65)	2441-005
4	1	Pent key - M10/M12	2372-008
5	1	Pent key - M8	2372-003
6	1	High Temp. Grease - 400g Tube	2581-003

Total No. of Items

Picked By:

Checked By:

COMPILED BY: Paul Kearney	REV	NEW	1	2	3		
	ECN No.		minor	1470	minor		
DATE: 09/10/2002	DATE		26/03/03	12/05/04	02/08/06		
	SIGN	PK	SB	SB	TW		